

A165 Energy meter

FDPM015

Feature



FDPM015SS



FDPM015SA



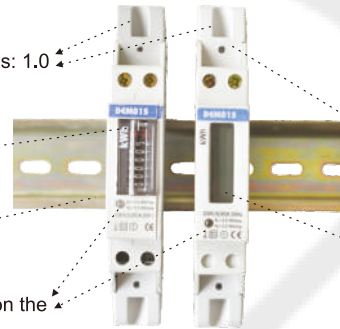
FDPM015SD

Economic Register display
(999999.9)

DIN Rail Mounting

Indicating light for Power on the
front of the panel

Class: 1.0



Pressing connection under the
terminal covers

High resolution LCD display
(9999999.9)

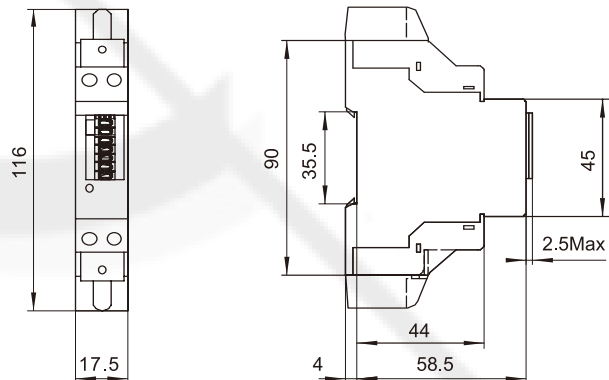
Electronic Single Phase

Technical data

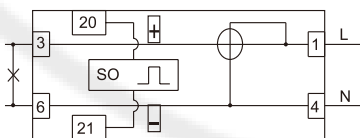
Model	Rated Voltage(V)	Basic Current(A)	Max. Current(A)	Display Range	Case Qty.(Pcs)
DPM015SS	127 230	5	30	999999.9 Register	100
DPM015SA	127 230	5	30	999999.9 Register	100
DPM015SD	127 230	5	30	9999999.9 LCD	100

Note: Please mention the voltage and current when ordering. Special specifications upon request.

Dimension



Wiring diagram

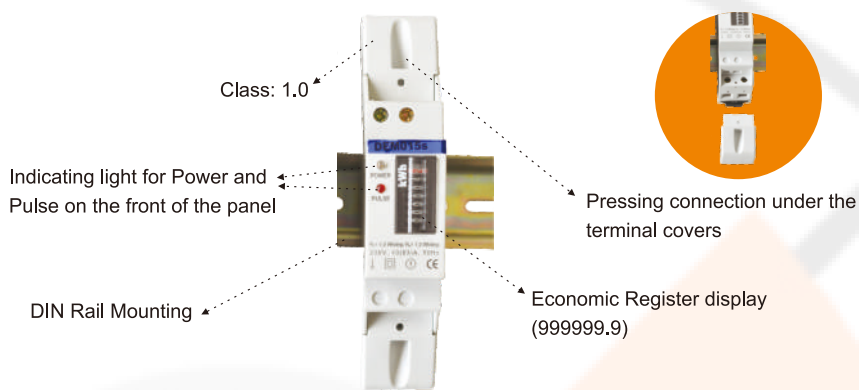


Terminal	Note
1	Inlet phase line
4	Inlet neutral line
3	Outgoing phase line
6	Outgoing neutral line (Inlet from top, outlet from bottom)
20 and 21	Port of pulse output passive

A165 Energy meter

Feature

FDPM015



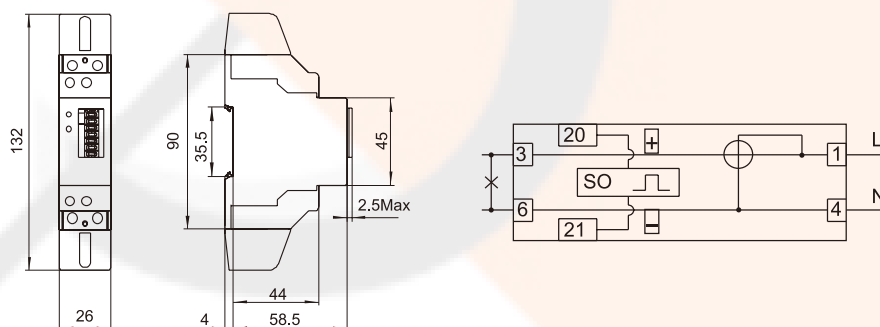
Electronic Single Phase

Technical data

Model	Rated Voltage(V)	Basic Current(A)	Max. Current(A)	Display Range	Case Qty.(Pcs)	Item Code
FDPM015SM	127 230	10	65	999999.9 Register	100	46301593

Note: Please mention the voltage and current when ordering, Special specifications upon request.

Dimension & Diagram



Wiring diagram

Terminal	Note
1	Inlet phase line
4	Inlet neutral line
3	Outgoing phase line
6	Outgoing neutral line (Inlet from top, outlet from bottom)
20 and 21	Port of pulse output passive

A165 Energy meter

Feature

FDPM011



FDPM011AG



FDPM011JC



FDPM011GC

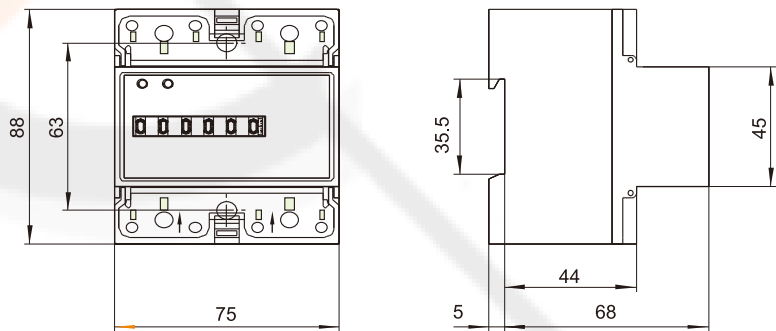
- Class: 1.0
- Indicating lamp for Power and pulse on the front of the panel
- DIN Rail Mounting
- Far infrared and RS485 Communication port are available for DPM011GC
- Electronic Single Phase
- Pressing connection under the sealable transparent cover
- Far infrared and RS485 communication port function
- Economic Register display (999999.9), LCD display is available for DPM011JC/GC

Technical data

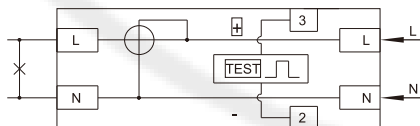
Model	Rated Voltage(V)	Basic Current(A)	Max. Current(A)	Display Range	Case Qty.(Pcs)
FDPM011AG	127 230	5 10 20	30 50 100	999999.9 Register	64
FDPM011JC	127 230	5 10 20	30 50 100	999999.9 LCD	64
FDPM011GC	127 230	5 10 20	30 50 100	999999.9 LCD	64

Note: Please mention the voltage and current when ordering, Special specifications upon request.

Dimension



Wiring diagram



Terminal	Note
1	Inlet phase line
4	Inlet neutral line
3	Outgoing phase line
6	Outgoing neutral line (Inlet from top, outlet from bottom)
20 and 21	Port of pulse output passive

A165 Energy meter

Feature

FDPM021



FDPM021DF



FDPM021MC



FDPM021GC

Pressing connection under the sealable transparent cover

High resolution LCD display(999999.9)

Phases and Pulse indicating lamps on the front of the panel

Class: 1.0

Economic Register display (999999.9)

DIN Rail Mounting

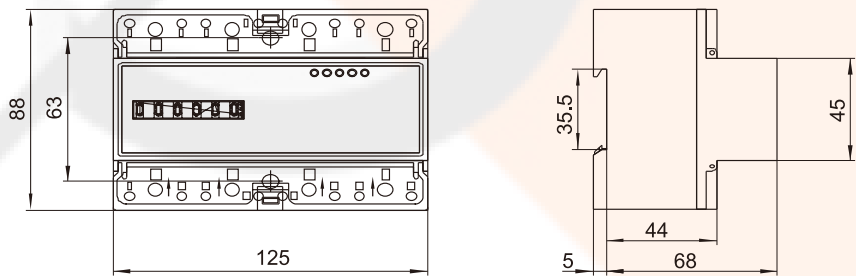
Electronic Three phase four wire

Technical data

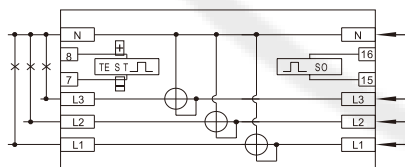
Model	Rated Voltage(V)	Basic Current(A)	Max. Current(A)	Display Range	Case Qty.(Pcs)	Item Code
FDPM021DF	127/220 230/400	5 10 20	30 60 100	999999.9 Register	20	46302141
FDPM021MC	127/220 230/400	5 10 20	30 60 100	999999.9 LCD	20	46302133
FDPM021GC	127/220 230/400	5 10 20	30 60 100	999999.9 LCD	20	46302173

Note: Please mention the voltage and current when ordering, Special specifications upon request.

Dimension



Wiring diagram



Terminal	Note
L1	L1 Phase line
L2	L2 Phase line
L3	L3 Phase line
N	Neutral line
7 and 8	Port of pulse output passive closed
15 and 16	Port of pulse output passive closed